



Marcelina Kubica ¹, Rebecca Richman MSN/ MPH ², Lois Dankwa MS ³, Jazmyn Covington MPH ³, Lindsay Martin MA ⁴, Kelly Bower PHD, MSN/MPH, RN ², Wendy Bennett MD, MPH ⁴

¹ Johns Hopkins University School of Medicine, ² Johns Hopkins University School of Nursing, ³ Johns Hopkins Bloomberg School of Public Health, ⁴ Johns Hopkins Internal Medicine, Baltimore, MD, USA



Introduction

- Black and Latina women have the highest rates of obesity in the United States
- Few interventions aim to reduce obesity-related cardiometabolic complications of pregnancy in Black and Latino populations or are integrated into community settings
- Implementation science can accelerate learning and facilitate effective translation of high-quality evidence-based research findings into practice

Objective

To develop an implementation science framework specific to a lifestyle intervention in pregnancy and postpartum integrated into early childhood home visiting (HV) programs

Materials and Methods

- Created a multidisciplinary team including an implementation scientist, a doctoral candidate in implementation science, and maternal and child health practitioners and researchers
- Reviewed evaluation and determinant implementation science frameworks, applying three criteria for selection:

Applicability to community settings

Relevance to maternal health equity

Ability to identify variability in implementation between HV programs

- Used criteria to select frameworks that would inform measurement approaches and sustainability

Results

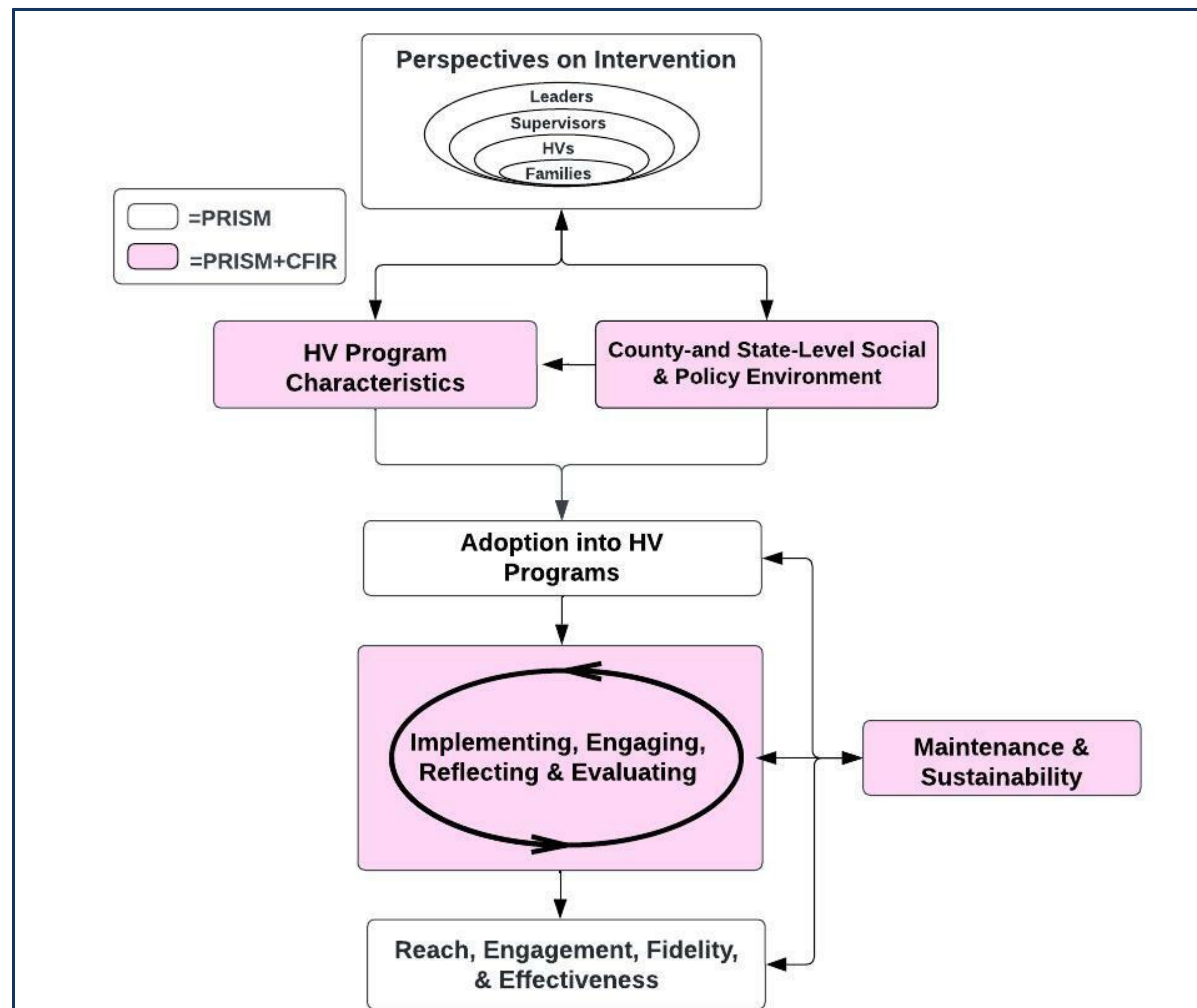


Figure 1 Healthy for Two Implementation Science Framework
Combined framework of Practical, Robust Implementation and Sustainability Model (PRISM) with domains from the Consolidated Framework for Implementation Research (CFIR)

Data Collection Method	PRISM/CFIR Area Measured
Home Visiting Program Survey	HV Program Characteristics
Home Visitor Surveys	Perspectives on Intervention
Interviews (formative & post-intervention)	<ul style="list-style-type: none"> • Perspectives on Intervention • Implementing, Engaging, Reflecting & Evaluating
Coordinating Council meetings	
Focus Groups	<ul style="list-style-type: none"> • Perspectives on Intervention • Adoption into HV Programs • Reach, Engagement, Fidelity, & Effectiveness
Secondary Data Collection	County- and State-Level Social & Policy Environment
Review of H42 Study Data	Reach, Engagement, Fidelity, & Effectiveness

Figure 2 Data Collection Methods for PRISM/CFIR Area Measured
Data collection methods for the Healthy for Two intervention within each measured framework area

Discussion

- Final framework included elements of determinant and evaluation implementation science frameworks
- Used the Practical, Robust Implementation and Sustainability Model (PRISM) framework
 - Domains: organizational perspective, organizational characteristics, reach, external environment, adoption, implementation, reach and effectiveness
- Added domains from the Consolidated Framework for Implementation Research (CFIR)
 - Domains: outer setting, inner setting, engaging, reflecting and evaluating

Conclusions

- The adapted PRISM framework with addition of CFIR domains will guide selection of measures to assess the implementation of a lifestyle intervention in HV programs
- Applying the framework will enhance reproducibility and sustainability
- Our framework could be useful for other community-engaged researchers because we evaluate factors influencing implementation across multiple community organizations

Limitations

- Review of implementation science frameworks excluded frameworks that did not fall within the evaluation and determinant framework categories, limiting the breadth of our final framework
- Focused on areas to measure which we identified as minimally-burdensome for our HV partner programs, choosing to omit potentially influential but more complex to measure factors